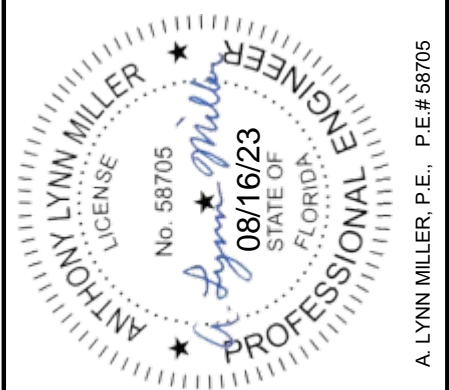




**MODEL 9650 FIXED WINDOW,  
IMPACT RESISTANT, HVHZ  
FLANGE, EQUAL-LEG & FIN FRAMES**

|                |                                   |
|----------------|-----------------------------------|
| DP RATING      | LARGE & SMALL                     |
| SEE TABLES A-G | MISSILE IMPACT<br>RESISTANT, HVHZ |



1) THIS PRODUCT HAS BEEN DESIGNED & TESTED TO COMPLY WITH THE REQUIREMENTS OF THE FLORIDA BUILDING CODE, INCLUDING THE HIGH VELOCITY HURRICANE ZONE (HVHZ).

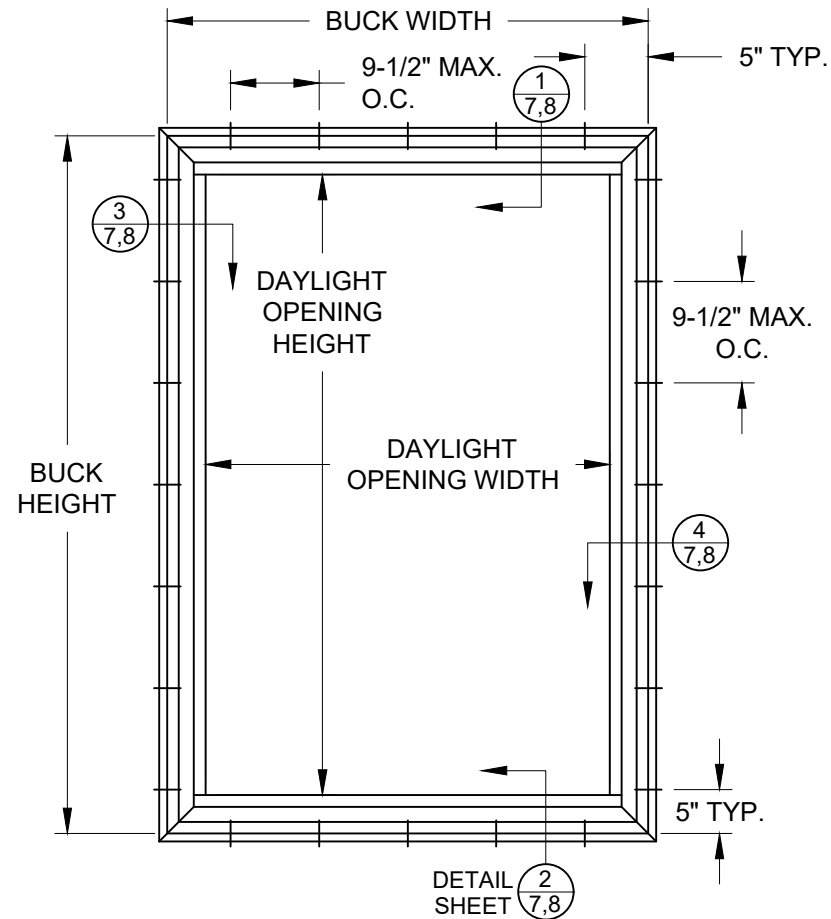
2) SHUTTERS ARE NOT REQUIRED WHEN USED IN WIND-BORNE DEBRIS REGIONS.

3) MASONRY ANCHORS MAY BE USED INTO WOOD. ALL WOOD BUCKS LESS THAN 1-1/2" THICK ARE TO BE CONSIDERED 1X INSTALLATIONS. 1X WOOD BUCKS ARE OPTIONAL IF UNIT IS INSTALLED DIRECTLY TO SUBSTRATE. WOOD BUCKS DEPICTED AS 2X ARE 1-1/2" THICK OR GREATER.

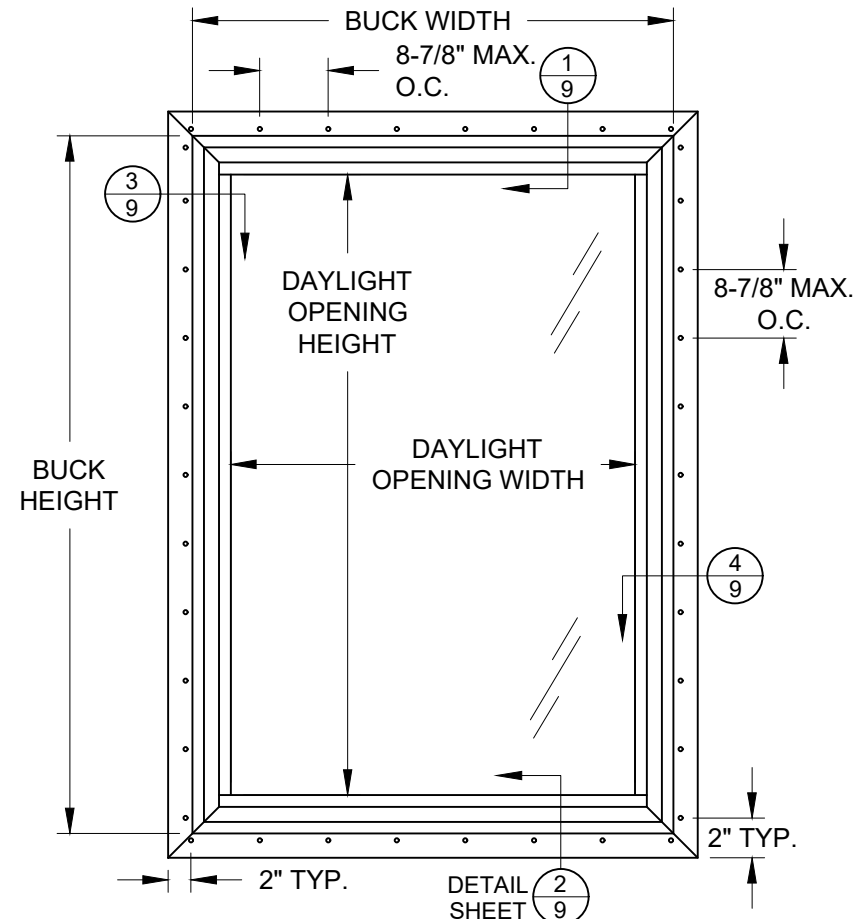
4) ANCHOR EMBEDMENT TO BASE MATERIAL SHALL BE BEYOND WALL DRESSING OR STUCCO. USE ANCHORS OF SUFFICIENT LENGTH.

5) MAX. 1/4" SHIMS ARE REQUIRED AT EACH ANCHOR LOCATION WHERE THE PRODUCT IS NOT FLUSH TO THE SUBSTRATE. USE SHIMS CAPABLE OF TRANSFERRING APPLIED LOADS.

6) THE ANCHORAGE METHODS SHOWN HAVE BEEN DESIGNED TO RESIST THE WIND LOADS CORRESPONDING TO THE REQUIRED DESIGN PRESSURE. THE 33-1/3% STRESS INCREASE HAS NOT BEEN USED IN THE DESIGN OF THIS PRODUCT. THE 1.6 LOAD DURATION FACTOR WAS USED FOR THE EVALUATION OF ANCHORS INTO WOOD. ANCHORS THAT COME INTO CONTACT WITH OTHER DISSIMILAR MATERIALS SHALL MEET THE REQUIREMENTS OF THE FLORIDA BUILDING CODE FOR CORROSION RESISTANCE.

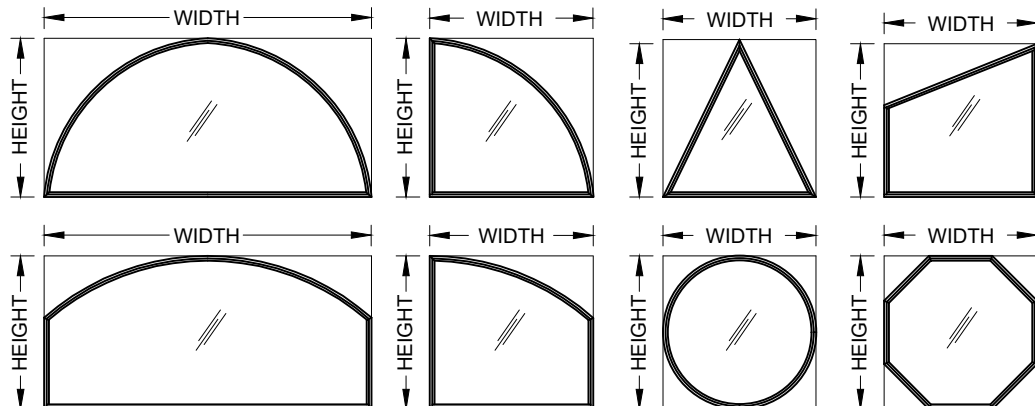


**TYP. ANCHOR LOCATIONS  
(FLANGED FRAME, EQUAL-LEG SIM.)**  
SEE TABLES A-G FOR SIZES



**TYP. ANCHOR LOCATIONS  
(INTEGRAL FIN FRAME)**  
SEE TABLES A-G FOR SIZES

SHAPES AS SHOW BELOW, OR SIMILAR MAY BE USED BY INSCRIBING THE SHAPE IN A BLOCK AND OBTAINING DESIGN PRESSURES FOR THAT BLOCK SIZE FROM THE TABLES ON SHEETS 2-7.



DAYLIGHT OPENING WIDTH = BUCK WIDTH - 4.25  
DAYLIGHT OPENING HEIGHT = BUCK HEIGHT - 4.25

|  |   |                               |                                  |   |
|--|---|-------------------------------|----------------------------------|---|
| PREPARED BY: A. LYNN MILLER, P.E.<br>1070 TECHNOLOGY DR<br>N. VENICE, FL 34275<br>(941)-480-1600 | REGISTRATION #29296<br>COPYRIGHT © 2022<br>NEWSOUTH WINDOW SOLUTIONS<br>LIMITED LICENSE TO MAKE<br>COPIES FOR PERMITTING            | FIXED WINDOW FPA, LM HVHZ     | GEN. NOTES AND ANCHOR ELEVATIONS | NEWSOUTH WINDOW SOLUTIONS<br>10741 CROSSROADS COMMERCE BLVD.<br>TAMPA, FL 33610 |
|  | REVISION:<br>REVISE SILICONE & ANCHOR,<br>OPTIONS, AND DP TABLES<br>CORRECT TYPO IN HEADER TABLE G. ADD<br>SHAPES, ADD SILICONE 995 | DATE:<br>11/28/22<br>02/01/23 | #:<br>B<br>C                     | BY:<br>SB<br>SB   |

TABLE A:

| Window Design Pressure (+/- psf)                                  |                 |      |      |      |      |      |      |      |      |      |      |      |      |      |      |      |      |      |      |      |
|---|-----------------|------|------|------|------|------|------|------|------|------|------|------|------|------|------|------|------|------|------|------|
| Glass Type 1: 7/8" LIG: (1/8" A - AIRSPACE - 5/16" A/A .090" PVB) |                 |      |      |      |      |      |      |      |      |      |      |      |      |      |      |      |      |      |      |      |
| WINDOW DIMENSIONS   | Long Side (in.) |      |      |      |      |      |      |      |      |      |      |      |      |      |      |      |      |      |      |      |
|   | 48              | 50   | 52   | 54   | 56   | 58   | 60   | 62   | 64   | 66   | 68   | 70   | 72   | 74   | 76   | 78   | 80   | 82   | 84   |      |
| Short Side (in.)  | 18              | 70.0 | 70.0 | 70.0 | 70.0 | 70.0 | 70.0 | 70.0 | 70.0 | 70.0 | 70.0 | 70.0 | 70.0 | 70.0 | 70.0 | 70.0 | 70.0 | 70.0 | 70.0 |      |
|   | 20              | 70.0 | 70.0 | 70.0 | 70.0 | 70.0 | 70.0 | 70.0 | 70.0 | 70.0 | 70.0 | 70.0 | 70.0 | 70.0 | 70.0 | 70.0 | 70.0 | 70.0 | 70.0 |      |
|   | 22              | 70.0 | 70.0 | 70.0 | 70.0 | 70.0 | 70.0 | 70.0 | 70.0 | 70.0 | 70.0 | 70.0 | 70.0 | 70.0 | 70.0 | 70.0 | 70.0 | 70.0 | 70.0 |      |
|   | 24              | 70.0 | 70.0 | 70.0 | 70.0 | 70.0 | 70.0 | 70.0 | 70.0 | 70.0 | 70.0 | 70.0 | 70.0 | 70.0 | 70.0 | 70.0 | 70.0 | 70.0 | 70.0 |      |
|   | 26              | 70.0 | 70.0 | 70.0 | 70.0 | 70.0 | 70.0 | 70.0 | 70.0 | 70.0 | 70.0 | 70.0 | 70.0 | 70.0 | 70.0 | 70.0 | 70.0 | 70.0 | 69.6 | 68.2 |
|   | 28              | 70.0 | 70.0 | 70.0 | 70.0 | 70.0 | 70.0 | 70.0 | 70.0 | 70.0 | 70.0 | 70.0 | 70.0 | 69.0 | 66.9 | 65.2 | 64.1 | 63.0 | 62.1 | 61.3 |
|   | 30              | 70.0 | 70.0 | 70.0 | 70.0 | 70.0 | 70.0 | 70.0 | 70.0 | 70.0 | 70.0 | 68.2 | 65.0 | 63.3 | 62.0 | 60.8 | 59.6 | 58.4 | 57.4 | 56.3 |
|   | 32              | 70.0 | 70.0 | 70.0 | 70.0 | 70.0 | 70.0 | 70.0 | 70.0 | 70.0 | 67.8 | 64.6 | 62.4 | 60.6 | 58.7 | 57.0 | 55.7 | 54.5 |      |      |
|   | 34              | 70.0 | 70.0 | 70.0 | 70.0 | 70.0 | 70.0 | 70.0 | 67.9 | 64.8 | 62.6 | 60.8 | 58.8 | 56.9 | 54.9 |      |      |      |      |      |
|   | 36              | 70.0 | 70.0 | 70.0 | 70.0 | 70.0 | 70.0 | 67.3 | 64.5 | 62.7 | 61.1 | 59.3 | 57.4 |      |      |      |      |      |      |      |
|   | 38              | 70.0 | 70.0 | 70.0 | 70.0 | 70.0 | 67.2 | 64.4 | 62.5 | 60.9 | 59.2 |      |      |      |      |      |      |      |      |      |
|   | 40              | 70.0 | 70.0 | 70.0 | 70.0 | 67.6 | 64.6 | 62.7 | 60.9 |      |      |      |      |      |      |      |      |      |      |      |
|   | 42              | 70.0 | 70.0 | 70.0 | 70.0 | 68.2 | 65.0 | 62.9 |      |      |      |      |      |      |      |      |      |      |      |      |
|   | 44              | 70.0 | 70.0 | 70.0 | 69.2 | 65.8 | 63.3 |      |      |      |      |      |      |      |      |      |      |      |      |      |
|   | 46              | 70.0 | 70.0 | 70.0 | 67.2 | 64.0 |      |      |      |      |      |      |      |      |      |      |      |      |      |      |
| 48  | 70.0            | 70.0 | 68.8 | 65.2 |      |      |      |      |      |      |      |      |      |      |      |      |      |      |      |      |

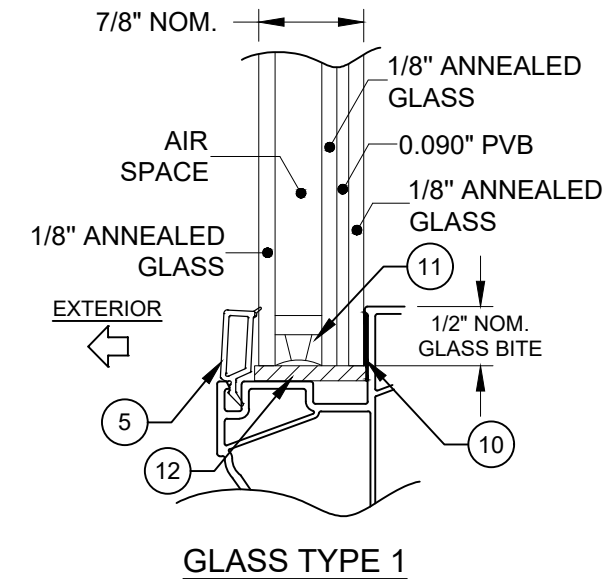
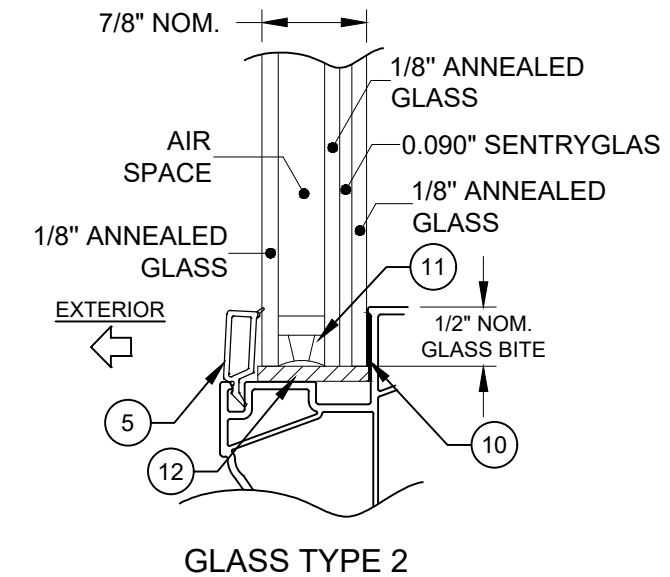


TABLE B:

| Window Design Pressure (+/- psf)                                 |                 |      |      |      |      |      |      |      |      |      |      |      |      |      |      |      |      |      |      |      |
|--|-----------------|------|------|------|------|------|------|------|------|------|------|------|------|------|------|------|------|------|------|------|
| Glass Type 2: 7/8" LIG: (1/8" A - AIRSPACE - 5/16" A/A .090" SG) |                 |      |      |      |      |      |      |      |      |      |      |      |      |      |      |      |      |      |      |      |
| WINDOW DIMENSIONS  | Long Side (in.) |      |      |      |      |      |      |      |      |      |      |      |      |      |      |      |      |      |      |      |
|  | 62              | 64   | 66   | 68   | 70   | 72   | 74   | 76   | 78   | 80   | 82   | 84   | 86   | 88   | 90   | 92   | 94   | 96   | 98   |      |
| Short Side (in.)   | 32              | 60.0 | 60.0 | 60.0 | 60.0 | 60.0 | 60.0 | 60.0 | 60.0 | 60.0 | 60.0 | 60.0 | 60.0 | 60.0 | 60.0 | 60.0 | 60.0 | 60.0 | 60.0 |      |
|  | 34              | 60.0 | 60.0 | 60.0 | 60.0 | 60.0 | 60.0 | 60.0 | 60.0 | 60.0 | 60.0 | 60.0 | 60.0 | 60.0 | 60.0 | 60.0 | 60.0 | 60.0 | 60.0 |      |
|  | 36              | 60.0 | 60.0 | 60.0 | 60.0 | 60.0 | 60.0 | 60.0 | 60.0 | 60.0 | 60.0 | 60.0 | 60.0 | 60.0 | 60.0 | 60.0 | 59.2 | 58.4 | 57.6 | 56.9 |
|  | 38              | 60.0 | 60.0 | 60.0 | 60.0 | 60.0 | 60.0 | 60.0 | 60.0 | 60.0 | 60.0 | 60.0 | 60.0 | 60.0 | 58.7 | 57.4 | 56.3 | 55.5 | 54.7 | 53.9 |
|  | 40              | 60.0 | 60.0 | 60.0 | 60.0 | 60.0 | 60.0 | 60.0 | 60.0 | 60.0 | 60.0 | 60.0 | 59.6 | 58.1 | 56.7 | 55.2 | 53.8 | 52.8 | 51.9 | 51.1 |
|  | 42              | 60.0 | 60.0 | 60.0 | 60.0 | 60.0 | 60.0 | 60.0 | 60.0 | 60.0 | 60.0 | 59.4 | 57.9 | 56.3 | 54.8 | 53.4 | 52.3 | 51.2 | 50.2 | 49.1 |
|  | 44              | 60.0 | 60.0 | 60.0 | 60.0 | 60.0 | 60.0 | 60.0 | 59.8 | 58.6 | 57.4 | 56.1 | 54.7 | 53.2 | 52.0 | 50.9 | 49.8 | 48.7 | 47.6 | 46.2 |
|  | 46              | 60.0 | 60.0 | 60.0 | 60.0 | 60.0 | 60.0 | 59.1 | 57.8 | 56.5 | 55.2 | 53.9 | 52.9 | 51.8 | 50.8 | 49.6 | 48.4 | 47.3 | 46.2 | 44.8 |
|  | 48              | 60.0 | 60.0 | 60.0 | 60.0 | 60.0 | 58.7 | 57.3 | 55.9 | 54.6 | 53.3 | 52.2 | 51.2 | 50.2 | 49.2 | 48.2 | 47.2 | 46.0 | 44.8 | 43.5 |
|  | 50              | 60.0 | 60.0 | 60.0 | 60.0 | 59.4 | 58.3 | 57.0 | 55.6 | 54.1 | 52.9 | 51.7 | 50.6 | 49.6 | 48.6 | 47.5 | 46.5 | 45.6 | 44.6 | 43.0 |
|  | 52              | 60.0 | 60.0 | 60.0 | 58.7 | 57.4 | 56.1 | 55.0 | 53.8 | 52.7 | 51.4 | 50.3 | 49.1 | 48.0 | 46.9 | 45.9 | 44.9 | 43.8 | 43.0 |      |
|  | 54              | 60.0 | 59.6 | 58.1 | 56.7 | 55.3 | 54.1 | 53.0 | 52.0 | 51.1 | 50.1 | 48.9 | 47.7 | 46.5 | 45.4 | 44.3 | 43.2 |      |      |      |
|  | 56              | 59.4 | 57.7 | 56.2 | 54.7 | 53.4 | 52.3 | 51.2 | 50.3 | 49.3 | 48.4 | 47.4 | 46.3 | 45.1 | 43.9 | 42.8 |      |      |      |      |
|  | 58              | 57.6 | 55.9 | 54.3 | 53.0 | 51.8 | 50.7 | 49.6 | 48.6 | 47.6 | 46.6 | 45.6 | 44.7 | 43.7 |      |      |      |      |      |      |
|  | 60              | 55.9 | 54.1 | 52.7 | 51.5 | 50.3 | 49.2 | 48.0 | 47.0 | 45.9 | 44.9 | 43.9 | 43.0 |      |      |      |      |      |      |      |
| 62   | 54.1            | 52.6 | 51.3 | 50.1 | 48.9 | 47.7 | 46.5 | 45.4 | 44.3 | 43.2 |      |      |      |      |      |      |      |      |      |      |



NOTES: 1) FOR SIZES NOT SHOWN, ROUND UP TO THE NEXT AVAILABLE WIDTH OR HEIGHT DIMENSION.  
 2) GLASS TYPES 3, 4, 6 OR 8 MUST BE USED ABOVE 30 FT IN THE HVHZ.



PREPARED BY: A. LYNN MILLER, P.E.  
 1070 TECHNOLOGY DR  
 N. VENICE, FL 34275  
 (941)-480-1600

REGISTRATION #29296  
 COPYRIGHT © 2022  
 NEWSOUTH WINDOW SOLUTIONS  
 LIMITED LICENSE TO MAKE  
 COPIES FOR PERMITTING

BY: FIXED WINDOW FPA, LM HVHZ

DP TABLES & GLASS TYPES

NEWSOUTH WINDOW SOLUTIONS  
 10741 CROSSROADS COMMERCE BLVD.  
 TAMPA, FL 33610

REVISION: REVISE SILICONE & ANCHOR, OPTIONS, AND DP TABLES. CORRECT TYPOGRAPHICAL ERRORS. ADD SHAPES, ADD SILICONE 995

DATE: 11/28/22

#: B C

DATE: 02/01/23

SCALE: NTS

BY: S.BERKOWITZ

DRAWING #: PW9650-FPA-02

SHEET: 2 OF 10

TABLE C:

| Window Design Pressure (+/- psf)                                  |                 |      |      |      |      |      |      |      |      |      |      |      |      |      |      |      |      |      |      |
|---|-----------------|------|------|------|------|------|------|------|------|------|------|------|------|------|------|------|------|------|------|
| Glass Type 3: 7/8" LIG: (1/8" T - AIRSPACE - 5/16" A/A .090" PVB) |                 |      |      |      |      |      |      |      |      |      |      |      |      |      |      |      |      |      |      |
| WINDOW DIMENSIONS   | Long Side (in.) |      |      |      |      |      |      |      |      |      |      |      |      |      |      |      |      |      |      |
|   | 48              | 50   | 52   | 54   | 56   | 58   | 60   | 62   | 64   | 66   | 68   | 70   | 72   | 74   | 76   | 78   | 80   | 82   | 84   |
| Short Side (in.)  | 18              | 70.0 | 70.0 | 70.0 | 70.0 | 70.0 | 70.0 | 70.0 | 70.0 | 70.0 | 70.0 | 70.0 | 70.0 | 70.0 | 70.0 | 70.0 | 70.0 | 70.0 | 70.0 |
|   | 20              | 70.0 | 70.0 | 70.0 | 70.0 | 70.0 | 70.0 | 70.0 | 70.0 | 70.0 | 70.0 | 70.0 | 70.0 | 70.0 | 70.0 | 70.0 | 70.0 | 70.0 | 70.0 |
|   | 22              | 70.0 | 70.0 | 70.0 | 70.0 | 70.0 | 70.0 | 70.0 | 70.0 | 70.0 | 70.0 | 70.0 | 70.0 | 70.0 | 70.0 | 70.0 | 70.0 | 70.0 | 70.0 |
|   | 24              | 70.0 | 70.0 | 70.0 | 70.0 | 70.0 | 70.0 | 70.0 | 70.0 | 70.0 | 70.0 | 70.0 | 70.0 | 70.0 | 70.0 | 70.0 | 70.0 | 70.0 | 70.0 |
|   | 26              | 70.0 | 70.0 | 70.0 | 70.0 | 70.0 | 70.0 | 70.0 | 70.0 | 70.0 | 70.0 | 70.0 | 70.0 | 70.0 | 70.0 | 70.0 | 70.0 | 70.0 | 70.0 |
|   | 28              | 70.0 | 70.0 | 70.0 | 70.0 | 70.0 | 70.0 | 70.0 | 70.0 | 70.0 | 70.0 | 70.0 | 70.0 | 70.0 | 70.0 | 70.0 | 70.0 | 69.0 | 68.1 |
|   | 30              | 70.0 | 70.0 | 70.0 | 70.0 | 70.0 | 70.0 | 70.0 | 70.0 | 70.0 | 70.0 | 70.0 | 70.0 | 68.9 | 67.5 | 66.2 | 64.9 | 63.8 | 62.6 |
|   | 32              | 70.0 | 70.0 | 70.0 | 70.0 | 70.0 | 70.0 | 70.0 | 70.0 | 70.0 | 70.0 | 69.4 | 67.3 | 65.2 | 63.3 | 61.9 | 60.6 |      |      |
|   | 34              | 70.0 | 70.0 | 70.0 | 70.0 | 70.0 | 70.0 | 70.0 | 70.0 | 70.0 | 69.6 | 67.5 | 65.4 | 63.2 | 61.0 |      |      |      |      |
|   | 36              | 70.0 | 70.0 | 70.0 | 70.0 | 70.0 | 70.0 | 70.0 | 70.0 | 69.7 | 67.8 | 65.9 | 63.7 |      |      |      |      |      |      |
|   | 38              | 70.0 | 70.0 | 70.0 | 70.0 | 70.0 | 70.0 | 70.0 | 69.5 | 67.6 | 65.8 |      |      |      |      |      |      |      |      |
|   | 40              | 70.0 | 70.0 | 70.0 | 70.0 | 70.0 | 70.0 | 69.6 | 67.6 |      |      |      |      |      |      |      |      |      |      |
|   | 42              | 70.0 | 70.0 | 70.0 | 70.0 | 70.0 | 69.2 |      |      |      |      |      |      |      |      |      |      |      |      |
|   | 44              | 70.0 | 70.0 | 70.0 | 70.0 | 69.2 |      |      |      |      |      |      |      |      |      |      |      |      |      |
|   | 46              | 70.0 | 70.0 | 70.0 | 69.7 |      |      |      |      |      |      |      |      |      |      |      |      |      |      |
|   | 48              | 70.0 | 70.0 | 70.0 | 70.0 |      |      |      |      |      |      |      |      |      |      |      |      |      |      |

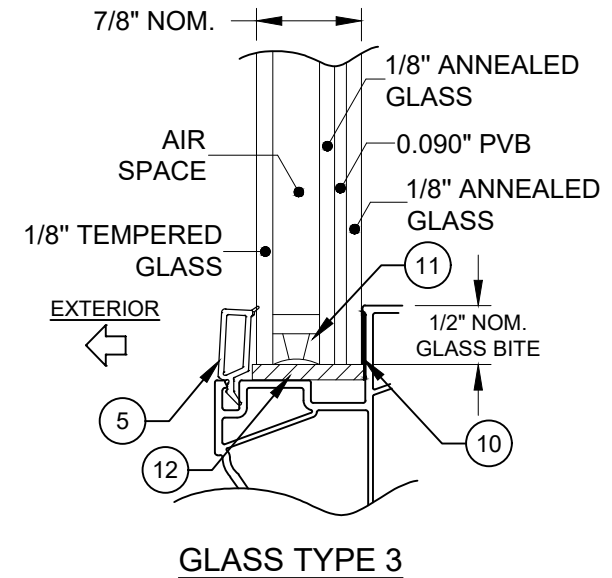
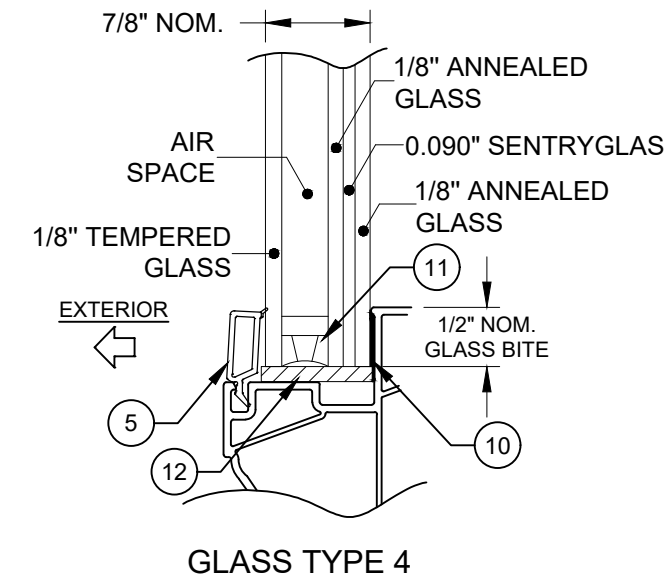
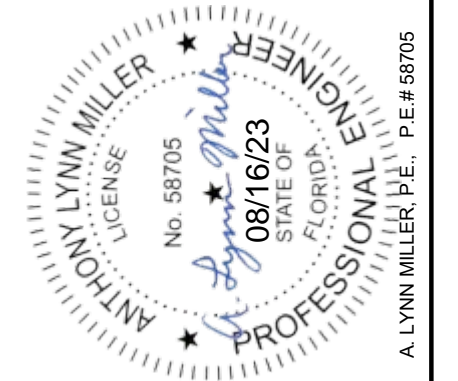


TABLE D:

| Window Design Pressure (+/- psf)                                 |                 |      |      |      |      |      |      |      |      |      |      |      |      |      |      |      |      |      |      |
|--|-----------------|------|------|------|------|------|------|------|------|------|------|------|------|------|------|------|------|------|------|
| Glass Type 4: 7/8" LIG: (1/8" T - AIRSPACE - 5/16" A/A .090" SG) |                 |      |      |      |      |      |      |      |      |      |      |      |      |      |      |      |      |      |      |
| WINDOW DIMENSIONS  | Long Side (in.) |      |      |      |      |      |      |      |      |      |      |      |      |      |      |      |      |      |      |
|  | 62              | 64   | 66   | 68   | 70   | 72   | 74   | 76   | 78   | 80   | 82   | 84   | 86   | 88   | 90   | 92   | 94   | 96   | 98   |
| Short Side (in.)   | 32              | 60.0 | 60.0 | 60.0 | 60.0 | 60.0 | 60.0 | 60.0 | 60.0 | 60.0 | 60.0 | 60.0 | 60.0 | 60.0 | 60.0 | 60.0 | 60.0 | 60.0 | 60.0 |
|  | 34              | 60.0 | 60.0 | 60.0 | 60.0 | 60.0 | 60.0 | 60.0 | 60.0 | 60.0 | 60.0 | 60.0 | 60.0 | 60.0 | 60.0 | 60.0 | 60.0 | 60.0 | 60.0 |
|  | 36              | 60.0 | 60.0 | 60.0 | 60.0 | 60.0 | 60.0 | 60.0 | 60.0 | 60.0 | 60.0 | 60.0 | 60.0 | 60.0 | 60.0 | 60.0 | 60.0 | 60.0 | 60.0 |
|  | 38              | 60.0 | 60.0 | 60.0 | 60.0 | 60.0 | 60.0 | 60.0 | 60.0 | 60.0 | 60.0 | 60.0 | 60.0 | 60.0 | 60.0 | 60.0 | 60.0 | 60.0 | 60.0 |
|  | 40              | 60.0 | 60.0 | 60.0 | 60.0 | 60.0 | 60.0 | 60.0 | 60.0 | 60.0 | 60.0 | 60.0 | 60.0 | 60.0 | 60.0 | 59.8 | 58.6 | 57.6 | 56.8 |
|  | 42              | 60.0 | 60.0 | 60.0 | 60.0 | 60.0 | 60.0 | 60.0 | 60.0 | 60.0 | 60.0 | 60.0 | 60.0 | 60.0 | 60.0 | 59.3 | 58.1 | 56.9 | 55.7 |
|  | 44              | 60.0 | 60.0 | 60.0 | 60.0 | 60.0 | 60.0 | 60.0 | 60.0 | 60.0 | 60.0 | 60.0 | 60.0 | 60.0 | 59.2 | 57.8 | 56.6 | 55.3 | 54.1 |
|  | 46              | 60.0 | 60.0 | 60.0 | 60.0 | 60.0 | 60.0 | 60.0 | 60.0 | 60.0 | 60.0 | 60.0 | 59.9 | 58.7 | 57.6 | 56.4 | 55.1 | 53.8 | 52.6 |
|  | 48              | 60.0 | 60.0 | 60.0 | 60.0 | 60.0 | 60.0 | 60.0 | 60.0 | 60.0 | 60.0 | 59.2 | 58.0 | 56.9 | 55.8 | 54.7 | 53.6 | 52.4 | 51.1 |
|  | 50              | 60.0 | 60.0 | 60.0 | 60.0 | 60.0 | 60.0 | 60.0 | 60.0 | 60.0 | 58.7 | 57.5 | 56.3 | 55.1 | 54.0 | 52.8 | 51.7 | 50.6 | 49.6 |
|  | 52              | 60.0 | 60.0 | 60.0 | 60.0 | 60.0 | 60.0 | 60.0 | 59.8 | 58.5 | 57.1 | 55.9 | 54.6 | 53.4 | 52.1 | 51.0 | 49.8 | 48.7 | 47.7 |
|  | 54              | 60.0 | 60.0 | 60.0 | 60.0 | 60.0 | 60.0 | 58.9 | 57.8 | 56.8 | 55.6 | 54.3 | 52.9 | 51.7 | 50.4 | 49.2 | 48.0 |      |      |
|  | 56              | 60.0 | 60.0 | 60.0 | 60.0 | 59.3 | 58.1 | 56.9 | 55.9 | 54.8 | 53.7 | 52.7 | 51.4 | 50.1 | 48.8 | 47.6 |      |      |      |
|  | 58              | 60.0 | 60.0 | 60.0 | 58.8 | 57.6 | 56.3 | 55.1 | 54.0 | 52.8 | 51.8 | 50.7 | 49.6 | 48.5 |      |      |      |      |      |
|  | 60              | 60.0 | 60.0 | 58.5 | 57.2 | 55.9 | 54.6 | 53.4 | 52.2 | 51.0 | 49.8 | 48.7 | 47.8 |      |      |      |      |      |      |
|  | 62              | 60.0 | 58.5 | 57.0 | 55.7 | 54.3 | 52.9 | 51.7 | 50.4 | 49.3 | 48.0 |      |      |      |      |      |      |      |      |



NOTES: 1) FOR SIZES NOT SHOWN, ROUND UP TO THE NEXT AVAILABLE WIDTH OR HEIGHT DIMENSION.  
 2) GLASS TYPES 3, 4, 6 OR 8 MUST BE USED ABOVE 30 FT IN THE HVHZ.



REGISTRATION #29296  
 COPYRIGHT © 2022  
 NEWSOUTH WINDOW SOLUTIONS  
 LIMITED LICENSE TO MAKE  
 COPIES FOR PERMITTING

PREPARED BY: A. LYNN MILLER, P.E.  
 1070 TECHNOLOGY DR  
 N. VENICE, FL 34275  
 (941)-480-1600

BY: SB SB SB

REVISION: REVISE SILICONE & ANCHOR, OPTIONS, AND DP TABLES. CORRECT TYPO IN HEADER TABLE G. ADD SHAPES, ADD SILICONE 995

DATE: 11/28/22

#: B C

DATE: 02/01/23

SCALE: NTS

BY: S.BERKOWITZ

DRAWING #: PW9650-FPA-02

SHEET: 3 OF 10

FIXED WINDOW FPA, LM HVHZ

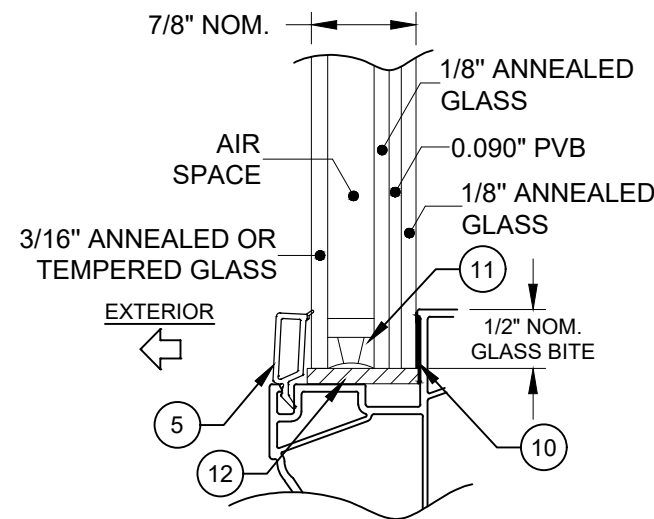
DP TABLES & GLASS TYPES

NEWSOUTH WINDOW SOLUTIONS  
 10741 CROSSROADS COMMERCE BLVD.  
 TAMPA, FL 33610



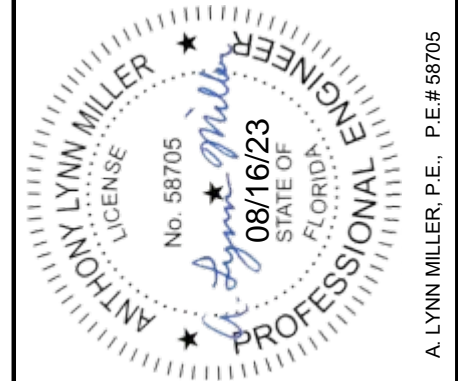
TABLE E:

| Window Design Pressure (+/- psf)                                   |                 |      |      |      |      |      |      |      |      |      |      |      |      |      |      |      |      |
|--|-----------------|------|------|------|------|------|------|------|------|------|------|------|------|------|------|------|------|
| Glass Type 5: 7/8" LIG: (3/16" A - AIRSPACE - 5/16" A/A .090" PVB) |                 |      |      |      |      |      |      |      |      |      |      |      |      |      |      |      |      |
| Glass Type 6: 7/8" LIG: (3/16" T - AIRSPACE - 5/16" A/A .090" PVB) |                 |      |      |      |      |      |      |      |      |      |      |      |      |      |      |      |      |
| WINDOW DIMENSIONS  | Long Side (in.) |      |      |      |      |      |      |      |      |      |      |      |      |      |      |      |      |
|  | 54              | 56   | 58   | 60   | 62   | 64   | 66   | 68   | 70   | 72   | 74   | 76   | 78   | 80   | 82   | 84   |      |
| Short Side (in.)   | 30              | 70.0 | 70.0 | 70.0 | 70.0 | 70.0 | 70.0 | 70.0 | 70.0 | 70.0 | 70.0 | 70.0 | 70.0 | 70.0 | 70.0 | 70.0 | 70.0 |
|  | 32              | 70.0 | 70.0 | 70.0 | 70.0 | 70.0 | 70.0 | 70.0 | 70.0 | 70.0 | 70.0 | 70.0 | 70.0 | 70.0 | 70.0 |      |      |
|  | 34              | 70.0 | 70.0 | 70.0 | 70.0 | 70.0 | 70.0 | 70.0 | 70.0 | 70.0 | 70.0 | 70.0 | 70.0 |      |      |      |      |
|  | 36              | 70.0 | 70.0 | 70.0 | 70.0 | 70.0 | 70.0 | 70.0 | 70.0 | 70.0 | 70.0 |      |      |      |      |      |      |
|  | 38              | 70.0 | 70.0 | 70.0 | 70.0 | 70.0 | 70.0 | 69.8 | 69.0 |      |      |      |      |      |      |      |      |
|  | 40              | 70.0 | 70.0 | 70.0 | 70.0 | 69.8 | 68.7 |      |      |      |      |      |      |      |      |      |      |
|  | 42              | 70.0 | 70.0 | 70.0 | 69.2 |      |      |      |      |      |      |      |      |      |      |      |      |
|  | 44              | 70.0 | 70.0 | 69.2 |      |      |      |      |      |      |      |      |      |      |      |      |      |
|  | 46              | 70.0 | 69.7 |      |      |      |      |      |      |      |      |      |      |      |      |      |      |
| 48   | 70.0            |      |      |      |      |      |      |      |      |      |      |      |      |      |      |      |      |



GLASS TYPE 5 (WITH ANNEALED CAP)  
GLASS TYPE 6 (WITH TEMPERED CAP)

NOTES: 1) FOR SIZES NOT SHOWN, ROUND UP TO THE NEXT AVAILABLE WIDTH OR HEIGHT DIMENSION.  
2) GLASS TYPES 3, 4, 6 OR 8 MUST BE USED ABOVE 30 FT IN THE HVHZ.



A. LYNN MILLER, P.E., P.E.# 58705

PREPARED BY: A. LYNN MILLER, P.E.  
1070 TECHNOLOGY DR  
N. VENICE, FL 34275  
(941)-480-1600

REGISTRATION #29296  
COPYRIGHT © 2022  
NEWSOUTH WINDOW SOLUTIONS  
LIMITED LICENSE TO MAKE  
COPIES FOR PERMITTING

BY: FIXED WINDOW FPA, LM HVHZ

DP TABLES & GLASS TYPES

NEWSOUTH WINDOW SOLUTIONS  
10741 CROSSROADS COMMERCE BLVD.  
TAMPA, FL 33610

|           |           |     |    |
|-----------|-----------|-----|----|
| REVISION: | REVISION: | BY: | SB |
| DATE:     | 11/28/22  | SB  | SB |
| #:        | B         | SB  | SB |
|           | C         |     |    |

REVISION: REVISE SILICONE & ANCHOR, OPTIONS, AND DP TABLES. CORRECT TYPOGRAPHICAL ERRORS, ADD SHAPES, ADD SILICONE 995

DATE: 02/01/23

SCALE: NTS

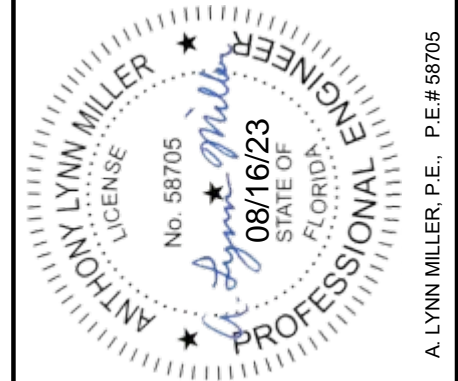
BY: S.BERKOWITZ

DRAWING #: PW9650-FPA-02

SHEET: 4 OF 10

TABLE F:

| Window Design Pressure (+/- psf)                                  |                 |      |      |      |      |      |      |      |      |      |      |      |      |      |      |      |      |      |      |      |      |      |      |      |      |      |      |
|---|-----------------|------|------|------|------|------|------|------|------|------|------|------|------|------|------|------|------|------|------|------|------|------|------|------|------|------|------|
| Glass Type 7: 7/8" LIG: (3/16" A - AIRSPACE - 5/16" A/A .090" SG) |                 |      |      |      |      |      |      |      |      |      |      |      |      |      |      |      |      |      |      |      |      |      |      |      |      |      |      |
| WINDOW DIMENSIONS   | Long Side (in.) |      |      |      |      |      |      |      |      |      |      |      |      |      |      |      |      |      |      |      |      |      |      |      |      |      |      |
|   | 70.875          | 72   | 74   | 76   | 78   | 80   | 82   | 84   | 86   | 88   | 90   | 92   | 94   | 96   | 98   | 100  | 102  | 104  | 106  | 108  | 110  | 112  | 114  | 116  | 118  | 120  |      |
| 40  | 60.0            | 60.0 | 60.0 | 60.0 | 60.0 | 60.0 | 60.0 | 60.0 | 60.0 | 60.0 | 60.0 | 60.0 | 60.0 | 60.0 | 60.0 | 60.0 | 60.0 | 60.0 | 60.0 | 59.0 | 58.0 | 57.0 | 55.8 | 54.8 | 53.8 | 53.0 | 52.4 |
| 42  | 60.0            | 60.0 | 60.0 | 60.0 | 60.0 | 60.0 | 60.0 | 60.0 | 60.0 | 60.0 | 60.0 | 60.0 | 60.0 | 60.0 | 60.0 | 60.0 | 60.0 | 60.0 | 58.8 | 57.3 | 55.8 | 54.2 | 53.1 | 52.2 | 51.4 | 50.8 | 50.0 |
| 44  | 60.0            | 60.0 | 60.0 | 60.0 | 60.0 | 60.0 | 60.0 | 60.0 | 60.0 | 60.0 | 60.0 | 60.0 | 60.0 | 60.0 | 60.0 | 60.0 | 60.0 | 59.9 | 58.0 | 56.3 | 54.7 | 53.2 | 52.1 | 51.1 |      |      |      |
| 46  | 60.0            | 60.0 | 60.0 | 60.0 | 60.0 | 60.0 | 60.0 | 60.0 | 60.0 | 60.0 | 60.0 | 60.0 | 60.0 | 60.0 | 60.0 | 60.0 | 59.9 | 58.2 | 56.4 | 54.6 |      |      |      |      |      |      |      |
| 48  | 60.0            | 60.0 | 60.0 | 60.0 | 60.0 | 60.0 | 60.0 | 60.0 | 60.0 | 60.0 | 60.0 | 60.0 | 60.0 | 60.0 | 60.0 | 59.8 | 58.4 | 57.5 |      |      |      |      |      |      |      |      |      |
| 50  | 60.0            | 60.0 | 60.0 | 60.0 | 60.0 | 60.0 | 60.0 | 60.0 | 60.0 | 60.0 | 60.0 | 60.0 | 60.0 | 60.0 | 59.5 | 58.3 |      |      |      |      |      |      |      |      |      |      |      |
| 52  | 60.0            | 60.0 | 60.0 | 60.0 | 60.0 | 60.0 | 60.0 | 60.0 | 60.0 | 60.0 | 60.0 | 60.0 | 60.0 | 58.8 |      |      |      |      |      |      |      |      |      |      |      |      |      |
| 54  | 60.0            | 60.0 | 60.0 | 60.0 | 60.0 | 60.0 | 60.0 | 60.0 | 60.0 | 60.0 | 60.0 | 59.1 |      |      |      |      |      |      |      |      |      |      |      |      |      |      |      |
| 56  | 60.0            | 60.0 | 60.0 | 60.0 | 60.0 | 60.0 | 60.0 | 60.0 | 60.0 | 60.0 | 58.6 |      |      |      |      |      |      |      |      |      |      |      |      |      |      |      |      |
| 58  | 60.0            | 60.0 | 60.0 | 60.0 | 60.0 | 60.0 | 60.0 | 60.0 | 59.8 |      |      |      |      |      |      |      |      |      |      |      |      |      |      |      |      |      |      |
| 60  | 60.0            | 60.0 | 60.0 | 60.0 | 60.0 | 60.0 | 60.0 | 58.8 |      |      |      |      |      |      |      |      |      |      |      |      |      |      |      |      |      |      |      |
| 62  | 60.0            | 60.0 | 60.0 | 60.0 | 60.0 | 59.1 |      |      |      |      |      |      |      |      |      |      |      |      |      |      |      |      |      |      |      |      |      |
| 64  | 60.0            | 60.0 | 60.0 | 60.0 | 58.6 |      |      |      |      |      |      |      |      |      |      |      |      |      |      |      |      |      |      |      |      |      |      |
| 66  | 60.0            | 60.0 | 59.7 | 58.3 |      |      |      |      |      |      |      |      |      |      |      |      |      |      |      |      |      |      |      |      |      |      |      |
| 68  | 60.0            | 59.6 | 58.1 |      |      |      |      |      |      |      |      |      |      |      |      |      |      |      |      |      |      |      |      |      |      |      |      |
| 70  | 58.9            | 58.1 |      |      |      |      |      |      |      |      |      |      |      |      |      |      |      |      |      |      |      |      |      |      |      |      |      |
| 70.875  | 58.3            |      |      |      |      |      |      |      |      |      |      |      |      |      |      |      |      |      |      |      |      |      |      |      |      |      |      |

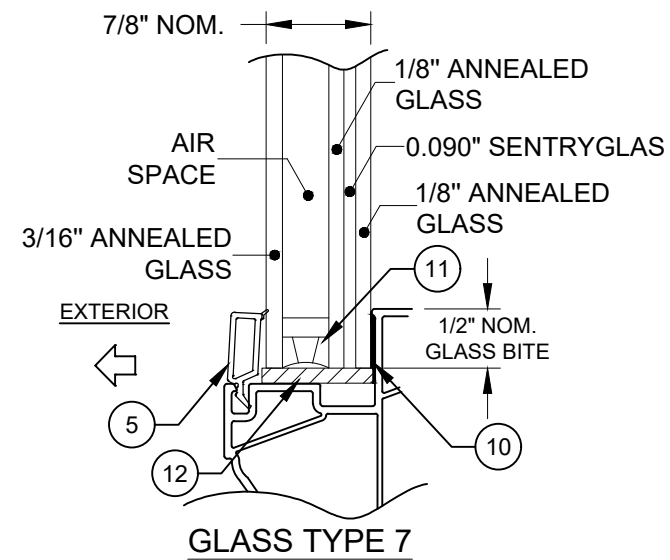


A. LYNN MILLER, P.E., P.E.# 58705

PREPARED BY: A. LYNN MILLER, P.E.  
 1070 TECHNOLOGY DR  
 N. VENICE, FL 34275  
 (941)-480-1600

REGISTRATION #29296  
 COPYRIGHT © 2022  
 NEWSOUTH WINDOW SOLUTIONS  
 LIMITED LICENSE TO MAKE  
 COPIES FOR PERMITTING

BY: FIXED WINDOW FPA, LM HVHZ  
 DP TABLES & GLASS TYPES  
 NEWSOUTH WINDOW SOLUTIONS  
 10741 CROSSROADS COMMERCE BLVD.  
 TAMPA, FL 33610

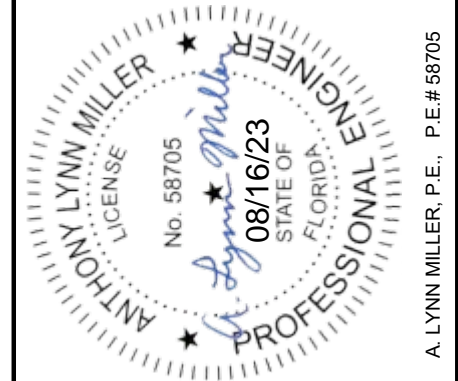


NOTES: 1) FOR SIZES NOT SHOWN, ROUND UP TO THE NEXT AVAILABLE WIDTH OR HEIGHT DIMENSION.  
 2) GLASS TYPES 3, 4, 6 OR 8 MUST BE USED ABOVE 30 FT IN THE HVHZ.

|            |               |     |    |
|------------|---------------|-----|----|
| REVISION:  | REVISION:     | BY: | SB |
| DATE:      | 11/28/22      | SB  | SB |
| #:         | B             | SB  | SB |
| DATE:      | 02/01/23      |     |    |
| SCALE:     | NTS           |     |    |
| BY:        | S.BERKOWITZ   |     |    |
| DRAWING #: | PW9650-FPA-02 |     |    |
| SHEET:     | 5 OF 10       |     |    |

TABLE G:

| Window Design Pressure (+/- psf)                                 |                 |      |      |      |      |      |      |      |      |      |      |      |      |      |      |      |      |      |      |      |      |      |      |      |      |      |  |
|--|-----------------|------|------|------|------|------|------|------|------|------|------|------|------|------|------|------|------|------|------|------|------|------|------|------|------|------|--|
| Glass Type 8: 7/8" LIG: (3/16" T- AIRSPACE - 5/16" A/A .090" SG) |                 |      |      |      |      |      |      |      |      |      |      |      |      |      |      |      |      |      |      |      |      |      |      |      |      |      |  |
| WINDOW DIMENSIONS  | Long Side (in.) |      |      |      |      |      |      |      |      |      |      |      |      |      |      |      |      |      |      |      |      |      |      |      |      |      |  |
|  | 70.875          | 72   | 74   | 76   | 78   | 80   | 82   | 84   | 86   | 88   | 90   | 92   | 94   | 96   | 98   | 100  | 102  | 104  | 106  | 108  | 110  | 112  | 114  | 116  | 118  | 120  |  |
| 40   | 60.0            | 60.0 | 60.0 | 60.0 | 60.0 | 60.0 | 60.0 | 60.0 | 60.0 | 60.0 | 60.0 | 60.0 | 60.0 | 60.0 | 60.0 | 60.0 | 60.0 | 60.0 | 60.0 | 60.0 | 60.0 | 60.0 | 60.0 | 60.0 | 60.0 | 60.0 |  |
| 42   | 60.0            | 60.0 | 60.0 | 60.0 | 60.0 | 60.0 | 60.0 | 60.0 | 60.0 | 60.0 | 60.0 | 60.0 | 60.0 | 60.0 | 60.0 | 60.0 | 60.0 | 60.0 | 60.0 | 60.0 | 60.0 | 60.0 | 60.0 | 60.0 | 60.0 | 60.0 |  |
| 44   | 60.0            | 60.0 | 60.0 | 60.0 | 60.0 | 60.0 | 60.0 | 60.0 | 60.0 | 60.0 | 60.0 | 60.0 | 60.0 | 60.0 | 60.0 | 60.0 | 60.0 | 60.0 | 60.0 | 60.0 | 60.0 | 60.0 | 60.0 | 60.0 |      |      |  |
| 46   | 60.0            | 60.0 | 60.0 | 60.0 | 60.0 | 60.0 | 60.0 | 60.0 | 60.0 | 60.0 | 60.0 | 60.0 | 60.0 | 60.0 | 60.0 | 60.0 | 60.0 | 60.0 | 60.0 | 60.0 | 60.0 | 60.0 | 60.0 |      |      |      |  |
| 48   | 60.0            | 60.0 | 60.0 | 60.0 | 60.0 | 60.0 | 60.0 | 60.0 | 60.0 | 60.0 | 60.0 | 60.0 | 60.0 | 60.0 | 60.0 | 60.0 | 60.0 | 60.0 |      |      |      |      |      |      |      |      |  |
| 50   | 60.0            | 60.0 | 60.0 | 60.0 | 60.0 | 60.0 | 60.0 | 60.0 | 60.0 | 60.0 | 60.0 | 60.0 | 60.0 | 60.0 | 60.0 | 60.0 |      |      |      |      |      |      |      |      |      |      |  |
| 52   | 60.0            | 60.0 | 60.0 | 60.0 | 60.0 | 60.0 | 60.0 | 60.0 | 60.0 | 60.0 | 60.0 | 60.0 | 60.0 | 60.0 |      |      |      |      |      |      |      |      |      |      |      |      |  |
| 54   | 60.0            | 60.0 | 60.0 | 60.0 | 60.0 | 60.0 | 60.0 | 60.0 | 60.0 | 60.0 | 60.0 | 60.0 |      |      |      |      |      |      |      |      |      |      |      |      |      |      |  |
| 56   | 60.0            | 60.0 | 60.0 | 60.0 | 60.0 | 60.0 | 60.0 | 60.0 | 60.0 | 60.0 | 60.0 |      |      |      |      |      |      |      |      |      |      |      |      |      |      |      |  |
| 58   | 60.0            | 60.0 | 60.0 | 60.0 | 60.0 | 60.0 | 60.0 | 60.0 | 60.0 |      |      |      |      |      |      |      |      |      |      |      |      |      |      |      |      |      |  |
| 60   | 60.0            | 60.0 | 60.0 | 60.0 | 60.0 | 60.0 | 60.0 | 60.0 |      |      |      |      |      |      |      |      |      |      |      |      |      |      |      |      |      |      |  |
| 62   | 60.0            | 60.0 | 60.0 | 60.0 | 60.0 | 60.0 |      |      |      |      |      |      |      |      |      |      |      |      |      |      |      |      |      |      |      |      |  |
| 64   | 60.0            | 60.0 | 60.0 | 60.0 | 60.0 |      |      |      |      |      |      |      |      |      |      |      |      |      |      |      |      |      |      |      |      |      |  |
| 66   | 60.0            | 60.0 | 60.0 | 60.0 |      |      |      |      |      |      |      |      |      |      |      |      |      |      |      |      |      |      |      |      |      |      |  |
| 68   | 60.0            | 60.0 | 60.0 |      |      |      |      |      |      |      |      |      |      |      |      |      |      |      |      |      |      |      |      |      |      |      |  |
| 70   | 60.0            | 60.0 |      |      |      |      |      |      |      |      |      |      |      |      |      |      |      |      |      |      |      |      |      |      |      |      |  |
| 70.875   | 60.0            |      |      |      |      |      |      |      |      |      |      |      |      |      |      |      |      |      |      |      |      |      |      |      |      |      |  |

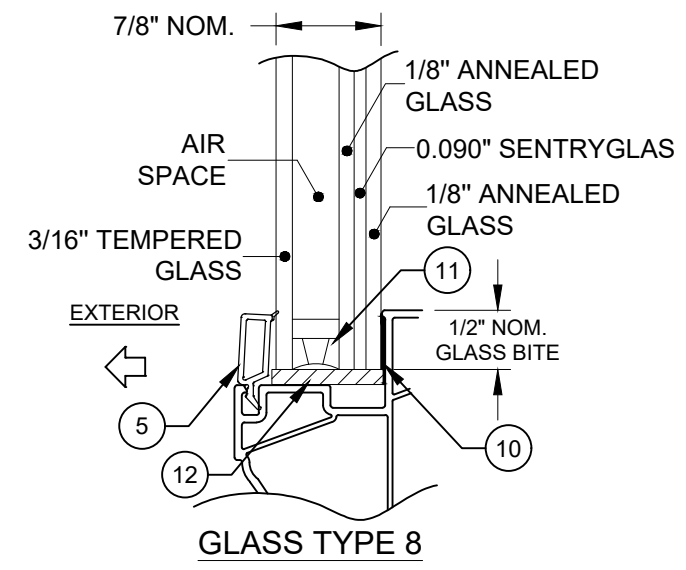


A. LYNN MILLER, P.E., P.E.# 58705

PREPARED BY: A. LYNN MILLER, P.E.  
 1070 TECHNOLOGY DR  
 N. VENICE, FL 34275  
 (941)-480-1600

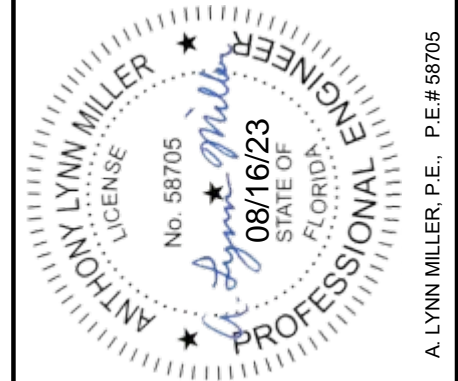
REGISTRATION #29296  
 COPYRIGHT © 2022  
 NEWSOUTH WINDOW SOLUTIONS  
 LIMITED LICENSE TO MAKE  
 COPIES FOR PERMITTING

BY: FIXED WINDOW FPA, LM HVHZ  
 DP TABLES & GLASS TYPES  
 NEWSOUTH WINDOW SOLUTIONS  
 10741 CROSSROADS COMMERCE BLVD.  
 TAMPA, FL 33610



NOTES: 1) FOR SIZES NOT SHOWN, ROUND UP TO THE NEXT AVAILABLE WIDTH OR HEIGHT DIMENSION.  
 2) GLASS TYPES 3, 4, 6 OR 8 MUST BE USED ABOVE 30 FT IN THE HVHZ.

|            |               |     |     |
|------------|---------------|-----|-----|
| REVISION:  | REVISION:     | BY: | BY: |
| DATE:      | 11/28/22      | SB  | SB  |
| #:         | B             | SB  | SB  |
| DATE:      | 02/01/23      |     |     |
| SCALE:     | NTS           |     |     |
| BY:        | S.BERKOWITZ   |     |     |
| DRAWING #: | PW9650-FPA-02 |     |     |
| SHEET:     | 6 OF 10       |     |     |



A. LYNN MILLER, P.E., P.E.# 58705

REGISTRATION #29296  
 COPYRIGHT © 2022  
 NEWSOUTH WINDOW SOLUTIONS  
 LIMITED LICENSE TO MAKE  
 COPIES FOR PERMITTING

FIXED WINDOW FPA, LM HVHZ  
 FLANGE INSTALLATION SECTION VIEWS  
 NEWSOUTH WINDOW SOLUTIONS  
 10741 CROSSROADS COMMERCE BLVD.  
 TAMPA, FL 33610

PREPARED BY: A. LYNN MILLER, P.E.  
 1070 TECHNOLOGY DR  
 N. VENICE, FL 34275  
 (941)-480-1600

|  |            |                      |        |
|--|------------|----------------------|--------|
| REVISION:  | BY:        | DATE:                | #:     |
| REVISE SILICONE & ANCHOR,<br>OPTIONS, AND DP TABLES<br>CORRECT TYPOGRAPHIC<br>SHAPES, ADD SILICONE 995 | SB<br>SB   | 11/28/22<br>02/01/23 | B<br>C |
| DATE: 02/01/23   | SCALE: NTS |                      |        |
| BY: S.BERKOWITZ  |            |                      |        |
| DRAWING #: PW9650-FPA-02   |            |                      |        |
| SHEET: 7 OF 10   |            |                      |        |

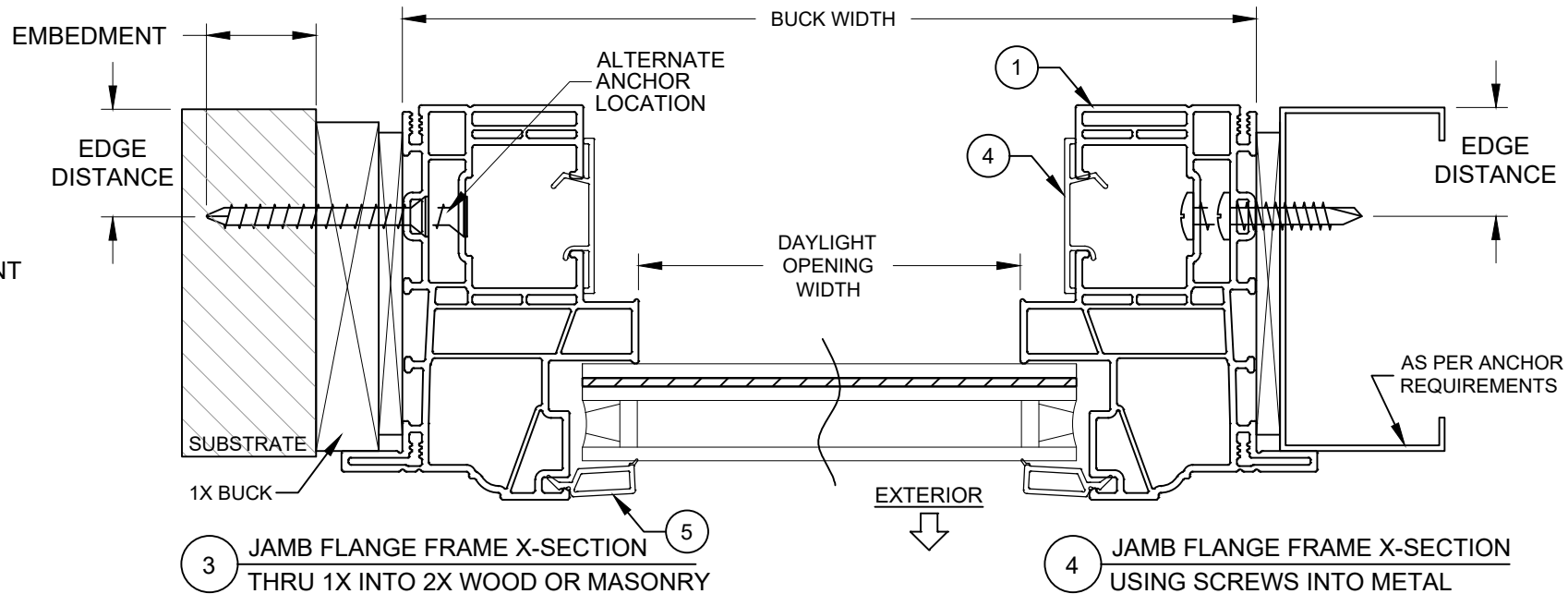
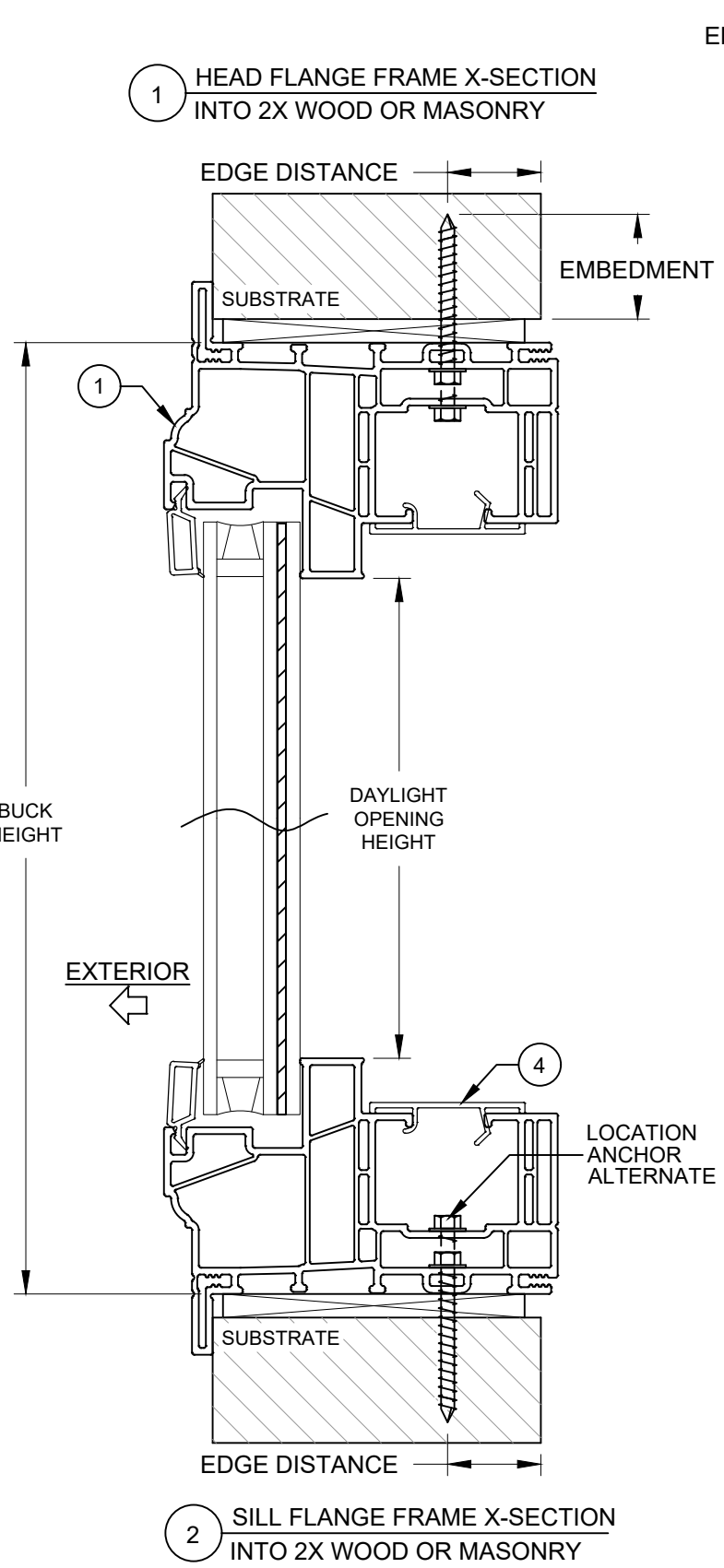


TABLE 2: INSTALLATION ANCHORS

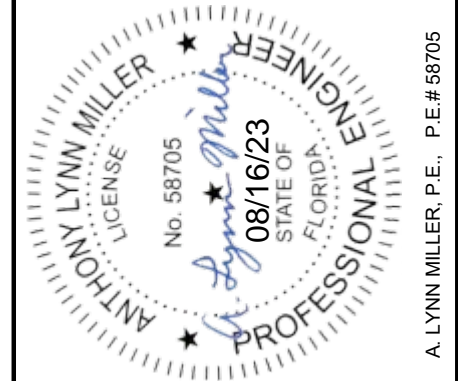
| Anchor                           | Substrate                  | Minimum Edge Distance | Minimum Embedment |
|----------------------------------|----------------------------|-----------------------|-------------------|
| #10 or #12 Steel or 410 SS Screw | Southern Pine (SG = .55)   | 9/16"                 | 1-3/8"            |
|                                  | Aluminum, 6063-T5 min.     | 3/8"                  | 0.050"            |
|                                  | Steel Stud, Gr. 33 min.    | 3/8"                  | 0.045" (20 Ga)    |
|                                  | A36 Steel                  | 3/8"                  | 0.050"            |
| 3/16" Steel Ultracon+            | Concrete (min. 2.9 ksi)    | 1"                    | 1-3/4"            |
|                                  | UngROUTED CMU, (ASTM C-90) | 1"                    | 1-1/4"            |
|                                  | Southern Pine (SG = .55)   | 1"                    | 1-3/8"            |
| 1/4" Steel Ultracon+             | Concrete (min. 3.0 ksi)    | 1"                    | 1-3/8"            |
|                                  | UngROUTED CMU, (ASTM C-90) | 1"                    | 1-1/4"            |
|                                  | Southern Pine (SG = .55)   | 1"                    | 1-3/8"            |

- 1) ANCHOR MUST EXTEND A MINIMUM OF 3 THREADS BEYOND ANY METAL SUBSTRATE.
- 2) "UNGROUTED CMU" VALUES MAY BE USED FOR GROUTED CMU APPLICATIONS.
- 3) ALL ANCHOR HEAD TYPES ARE APPLICABLE.

INSTALLATION NOTES:

- 1) SEE SHEET 1 FOR ANCHOR SPACING REQUIREMENTS.
- 2) ANY INSTALLATION OPTION SHOWN (2X BUCK, 1X BUCK, DIRECT TO MASONRY, STEEL STUD) MAY BE USED ON ANY SIDE OF THE WINDOW.
- 3) USE ONLY SUBSTRATE APPROPRIATE ANCHORS LISTED IN ANCHOR TABLE. FOLLOW EMBEDMENT AND EDGE DISTANCE LIMITS. MAX. SHIM THICKNESS TO BE 1/4". ANY INSTALLATION OPTION SHOWN MAY BE USED ON ANY OR ALL SIDES OF THE WINDOW.





A. LYNN MILLER, P.E., P.E.# 58705

REGISTRATION #29296  
 COPYRIGHT © 2022  
 NEWSOUTH WINDOW SOLUTIONS  
 LIMITED LICENSE TO MAKE  
 COPIES FOR PERMITTING

PREPARED BY: A. LYNN MILLER, P.E.  
 1070 TECHNOLOGY DR  
 N. VENICE, FL 34275  
 (941)-480-1600

|            |   |
|------------|---|
| BY:        | FIXED WINDOW FPA, LM HVHZ   |
| REVISION:  | EQUAL-LEG INSTALLATION SECTION VIEWS  |
| DATE:      | NEWSOUTH WINDOW SOLUTIONS<br>10741 CROSSROADS COMMERCE BLVD.<br>TAMPA, FL 33610 |
| #:         | B C   |
| DATE:      | 02/01/23  |
| SCALE:     | NTS   |
| BY:        | S.BERKOWITZ   |
| DRAWING #: | PW9650-FPA-02   |
| SHEET:     | 8 OF 10   |

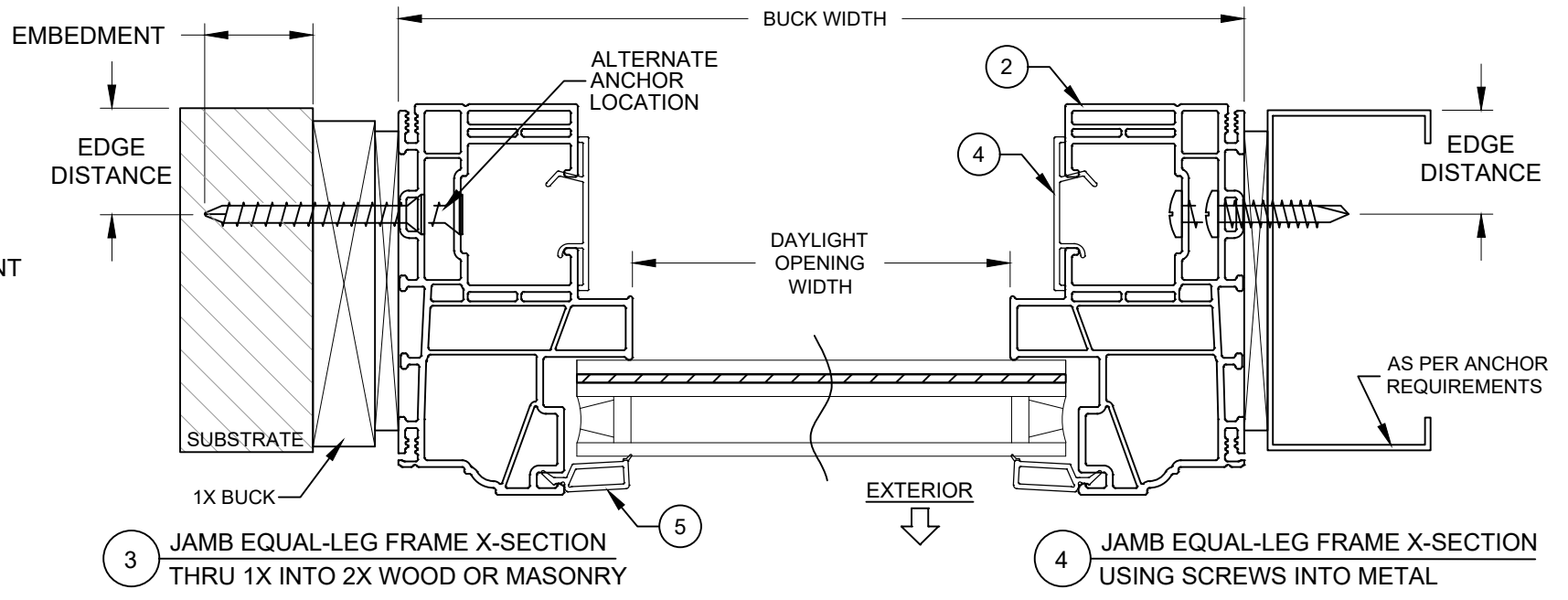
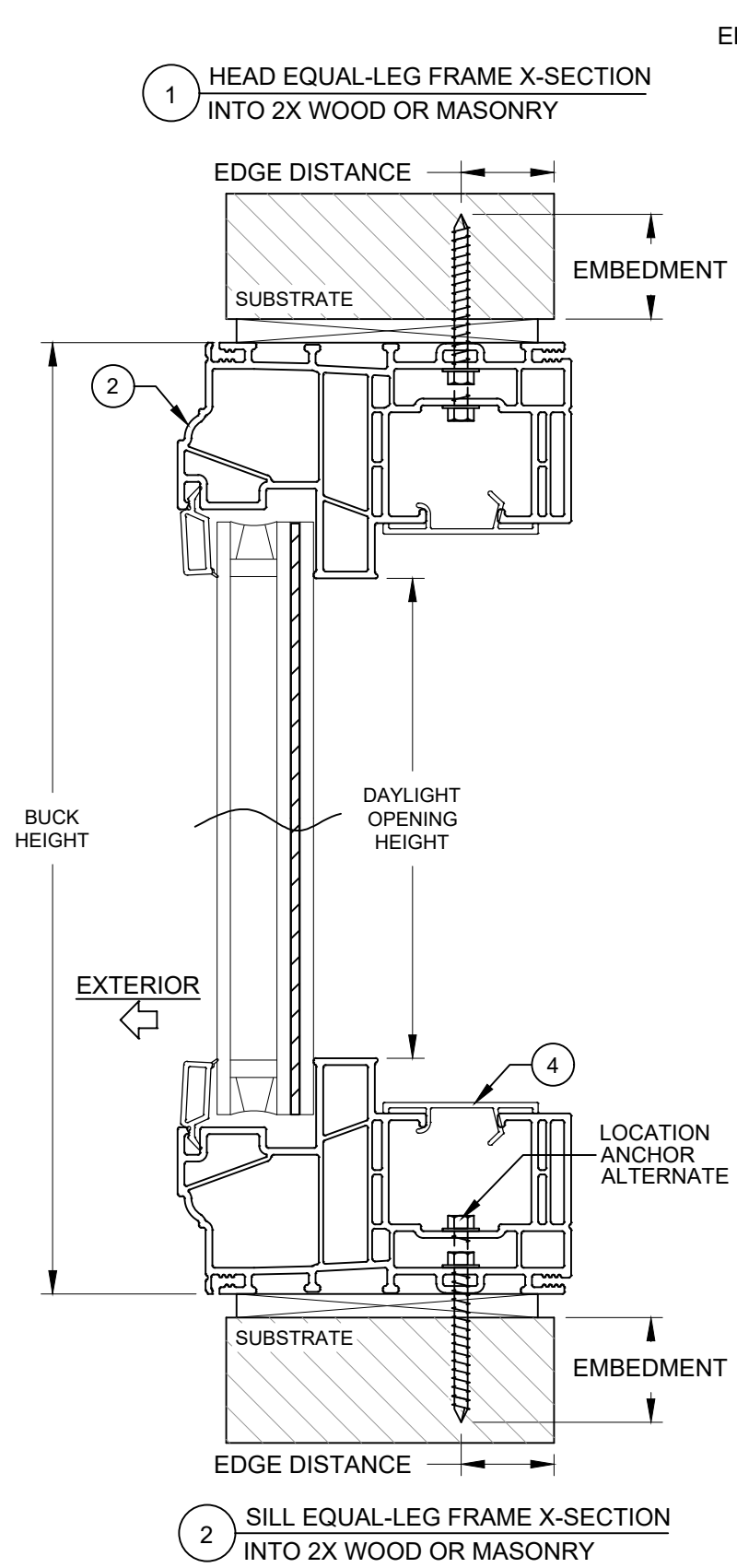


TABLE 3: INSTALLATION ANCHORS

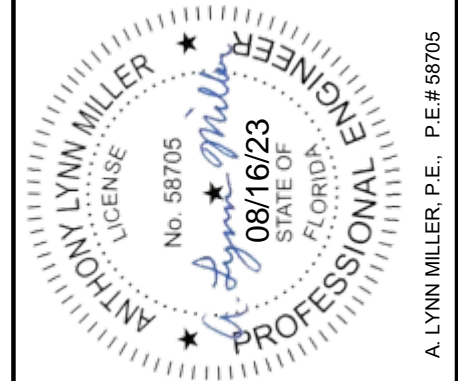
| Anchor                           | Substrate                  | Minimum Edge Distance | Minimum Embedment |
|----------------------------------|----------------------------|-----------------------|-------------------|
| #10 or #12 Steel or 410 SS Screw | Southern Pine (SG = .55)   | 9/16"                 | 1-3/8"            |
|                                  | Aluminum, 6063-T5 min.     | 3/8"                  | 0.050"            |
|                                  | Steel Stud, Gr. 33 min.    | 3/8"                  | 0.045" (20 Ga)    |
|                                  | A36 Steel                  | 3/8"                  | 0.050"            |
| 3/16" Steel Ultracon+            | Concrete (min. 2.9 ksi)    | 1"                    | 1-3/4"            |
|                                  | UngROUTED CMU, (ASTM C-90) | 1"                    | 1-1/4"            |
|                                  | Southern Pine (SG = .55)   | 1"                    | 1-3/8"            |
| 1/4" Steel Ultracon+             | Concrete (min. 3.0 ksi)    | 1"                    | 1-3/8"            |
|                                  | UngROUTED CMU, (ASTM C-90) | 1"                    | 1-1/4"            |
|                                  | Southern Pine (SG = .55)   | 1"                    | 1-3/8"            |

- 1) ANCHOR MUST EXTEND A MINIMUM OF 3 THREADS BEYOND ANY METAL SUBSTRATE.
- 2) "UNGROUTED CMU" VALUES MAY BE USED FOR GROUTED CMU APPLICATIONS.
- 3) ALL ANCHOR HEAD TYPES ARE APPLICABLE.

INSTALLATION NOTES:

- 1) SEE SHEET 1 FOR ANCHOR SPACING REQUIREMENTS.
- 2) ANY INSTALLATION OPTION SHOWN (2X BUCK, 1X BUCK, DIRECT TO MASONRY, STEEL STUD) MAY BE USED ON ANY SIDE OF THE WINDOW.
- 3) USE ONLY SUBSTRATE APPROPRIATE ANCHORS LISTED IN ANCHOR TABLE. FOLLOW EMBEDMENT AND EDGE DISTANCE LIMITS. MAX. SHIM THICKNESS TO BE 1/4". ANY INSTALLATION OPTION SHOWN MAY BE USED ON ANY OR ALL SIDES OF THE WINDOW.





A. LYNN MILLER, P.E., P.E.# 58705

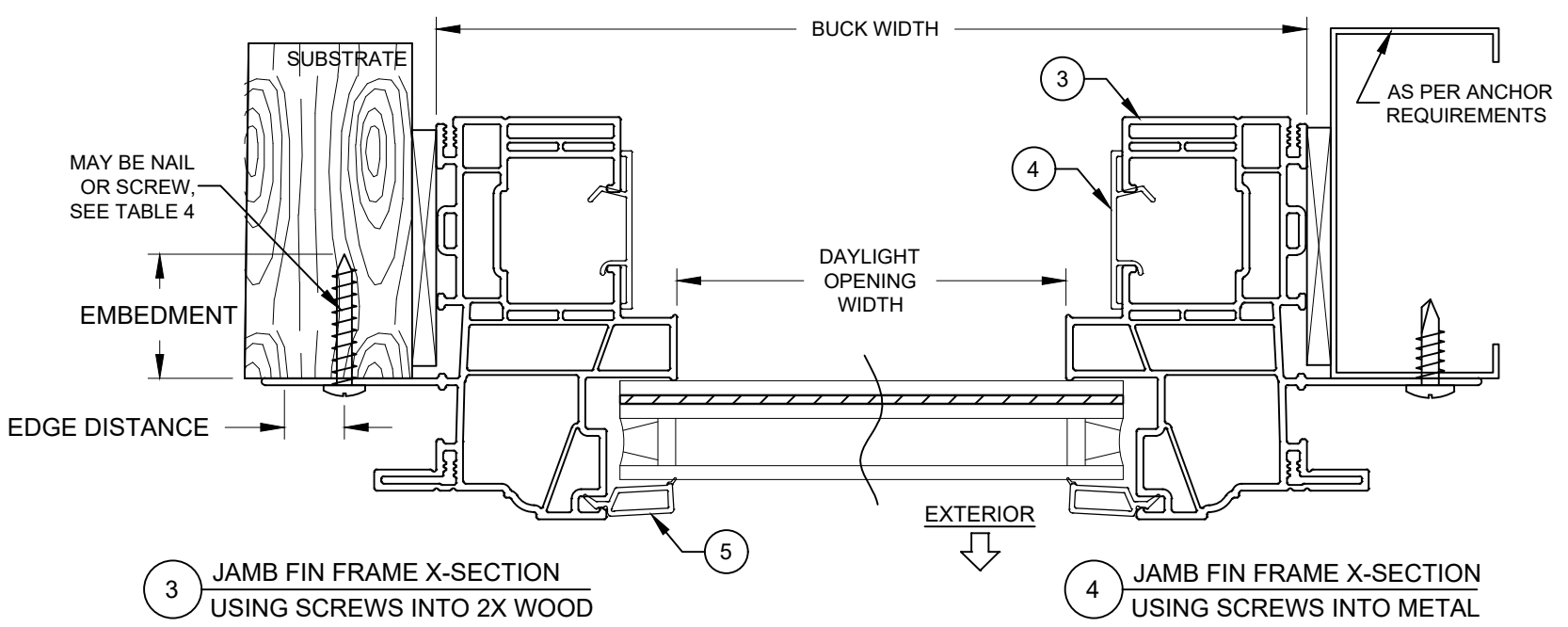
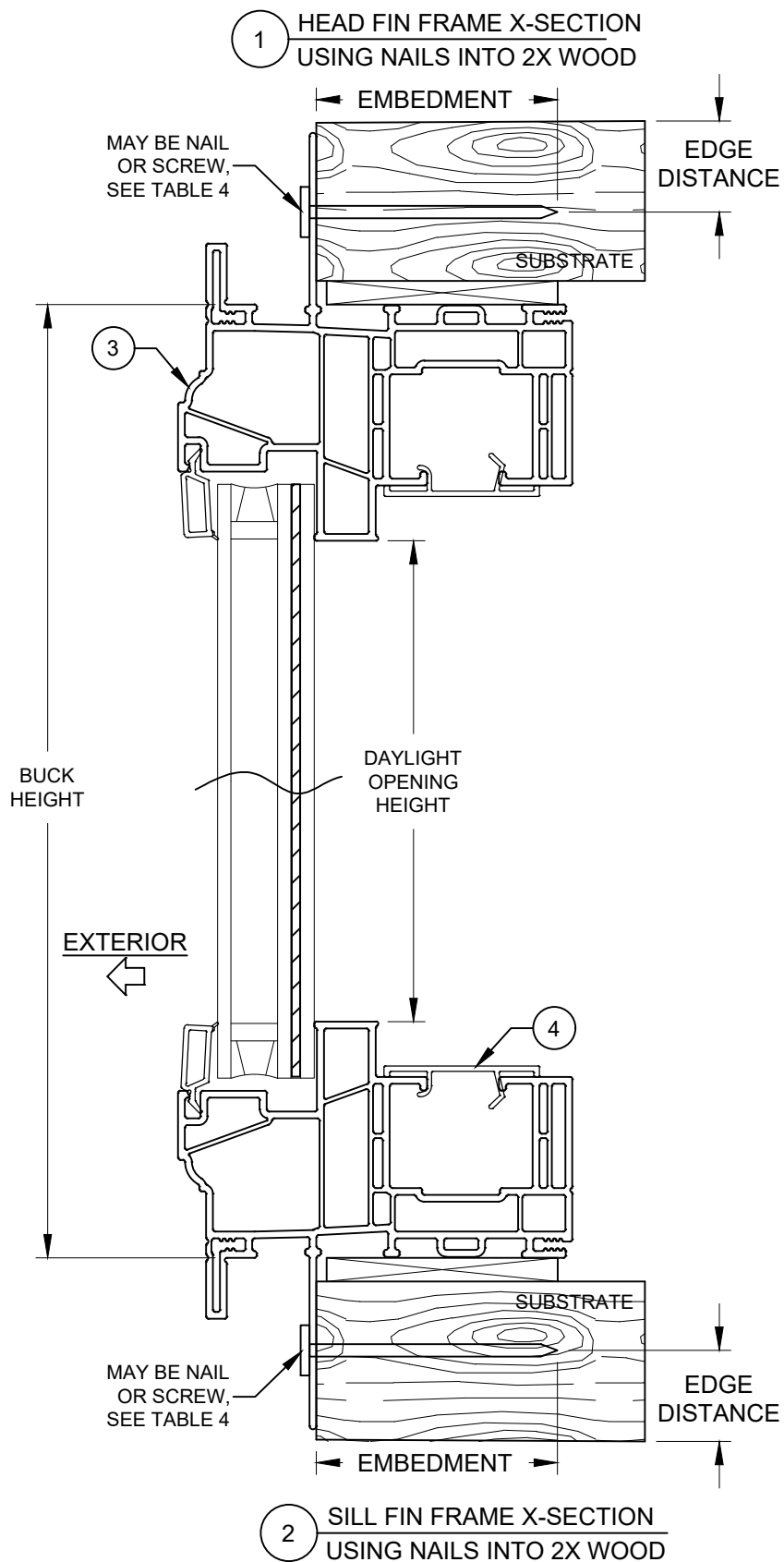


TABLE 4: INSTALLATION ANCHORS

| Anchor                      | Substrate                     | Min. Edge Distance | Min. Embedment |
|-----------------------------|-------------------------------|--------------------|----------------|
| 2-1/2" x .113" Box Nail     | P.T. Southern Pine (SG = .55) | 5/16"              | 2-7/16"        |
| 2-1/2" x .131" Common Nail  | P.T. Southern Pine (SG = .55) | 3/8"               | 2-7/16"        |
| 2-1/2" x .145" Roofing Nail | P.T. Southern Pine (SG = .55) | 3/8"               | 2-7/16"        |
| #10 Steel SMS               | P.T. Southern Pine (SG = .55) | 1/2"               | 1-3/8"         |
|                             | Aluminum, 6063-T5 min.        | 3/8"               | 1/8"           |
|                             | Steel Stud, Gr. 33 min.       | 3/8"               | 0.036          |
|                             | A36 Steel                     | 3/8"               | 1/8"           |

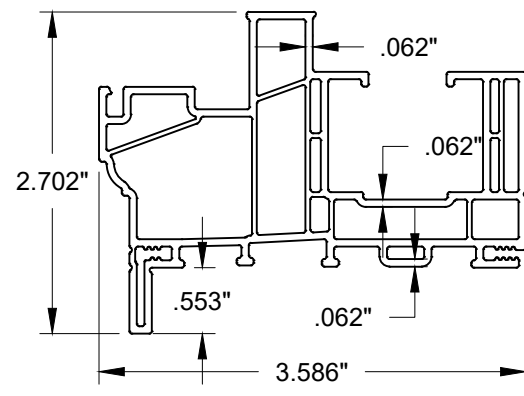
1) ANCHOR MUST EXTEND A MINIMUM OF 3 THREADS BEYOND ANY METAL SUBSTRATE.  
 2) ALL ANCHOR HEAD TYPES ARE APPLICABLE.

INSTALLATION NOTES:

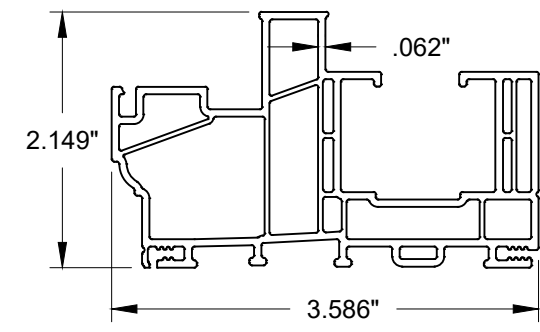
- SEE SHEET 1 FOR SPACING REQUIREMENTS.
- FLANGE AND/OR FIN MAY BE REMOVED TO CREATE OTHER APPROVED FRAME TYPE.
- USE ONLY SUBSTRATE APPROPRIATE ANCHORS LISTED IN ANCHOR TABLE. FOLLOW EMBEDMENT AND EDGE DISTANCE LIMITS. ANY INSTALLATION OPTION SHOWN MAY BE USED ON ANY OR ALL SIDES OF THE WINDOW.
- MAX. SHIM THICKNESS TO BE 1/4". MAX. SHIM SPACING TO BE 18".

REGISTRATION #29296  
 A. LYNN MILLER, P.E.  
 1070 TECHNOLOGY DR  
 N. VENICE, FL 34275  
 (941)-480-1600

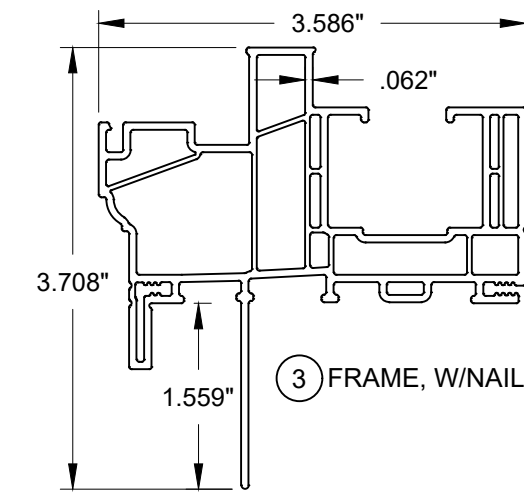
|   |   |
|---|---|
| REGISTRATION #29296   | FIXED WINDOW FPA, LM HVHZ   |
| COPYRIGHT © 2022<br>NEWSOUTH WINDOW SOLUTIONS<br>LIMITED LICENSE TO MAKE<br>COPIES FOR PERMITTING | FIN INSTALLATION SECTION VIEWS  |
| PREPARED BY: A. LYNN MILLER, P.E.   | NEWSOUTH WINDOW SOLUTIONS<br>10741 CROSSROADS COMMERCE BLVD.<br>TAMPA, FL 33610 |
| REVISION:   | BY: SB  |
| DATE: 11/28/22  | REVISION: REVISE SILICONE & ANCHOR, OPTIONS, AND DP TABLES                      |
| #: B  | CORRECT TYPOGRAPHY HEADERS, ADD SHAPES, ADD SILICONE 995                        |
| DATE: 02/01/23  |   |
| SCALE: NTS  |   |
| BY: S.BERKOWITZ   |   |
| DRAWING #: PW9650-FPA-02  |   |
| SHEET: 9 OF 10  |   |



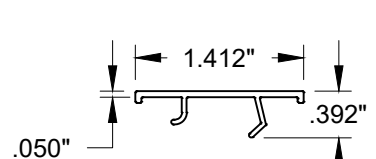
① FRAME, W/FLANGE



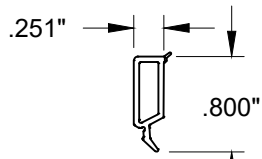
② FRAME, EQUAL LEG



③ FRAME, W/NAILING FIN



④ ANCHOR COVER

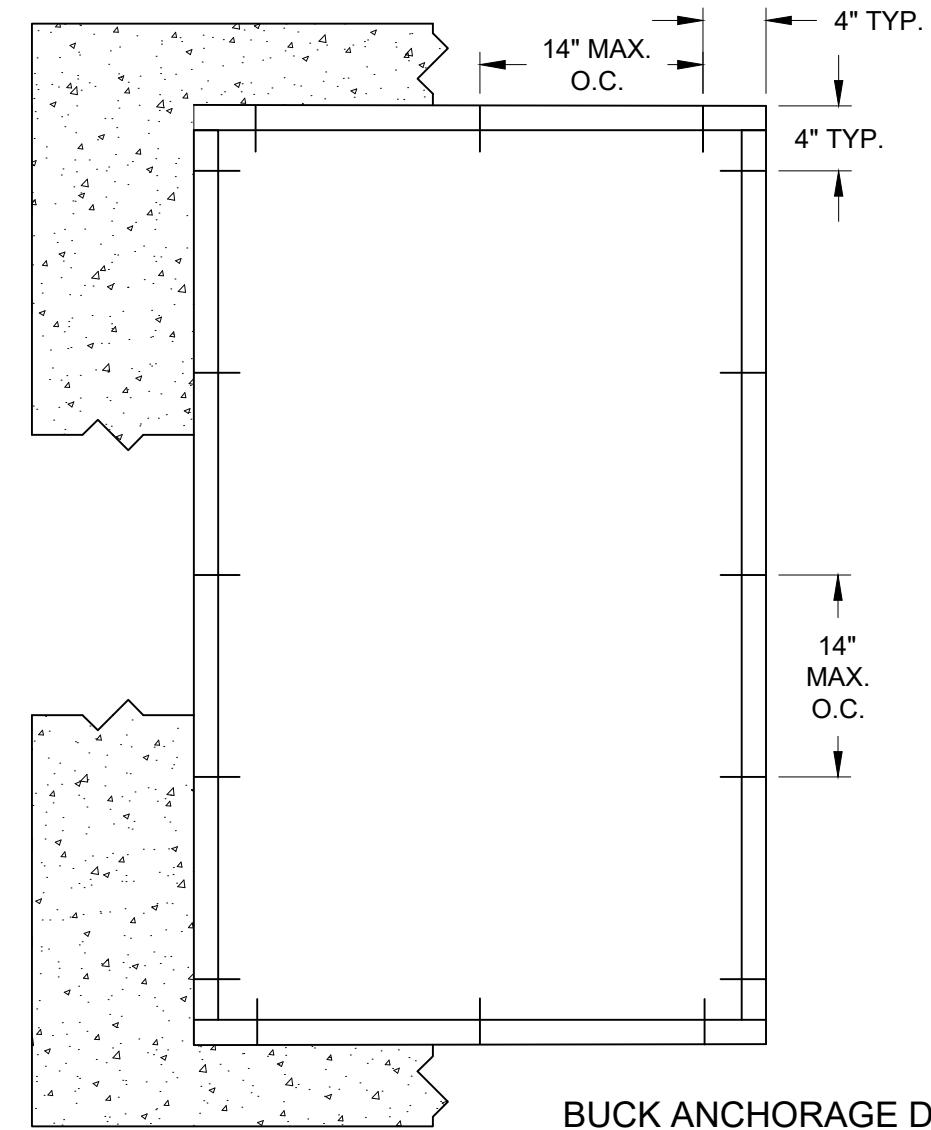


⑤ GLAZING BEAD

TABLE 5:

| #  | Part # | Description                                  | Material |
|----|--------|--|----------|
| 1  | 9465   | Frame, w/Flange                              | PVC      |
| 2  | 9465   | Frame, Equal Leg                             | PVC      |
| 3  | 9455   | Frame, w/Nailing Fin                         | PVC      |
| 4  | 9473   | Anchor Cover                                 | PVC      |
| 5  | 9736   | Glazing Bead                                 | PVC      |
| 10 |        | Glazing compound: RGS7700, Dow 791, 983, 995 |          |
| 11 |        | Metal or TPS Spacer                          | VARIES   |
| 12 | 7061   | Setting Block, 1/8" x 7/8" x 2"              | EPDM     |

THE APPROVED WHITE, RIGID PVC EXTERIOR EXTRUSIONS ARE TO BE PRODUCED BY EXTRUDERS' LICENSEES UNDER "AAMA CERTIFICATION PROGRAMS FOR RIGID PVC EXTRUSIONS".



BUCK ANCHORAGE DETAIL

TABLE 6:

| Anchor               | Substrate                  | Minimum Edge Distance | Minimum Embedment |
|----------------------|----------------------------|-----------------------|-------------------|
| 1/4" Steel Ultracon+ | Concrete (min. 3.0 ksi)    | 1"                    | 1-3/8"            |
|                      | UngROUTED CMU, (ASTM C-90) | 1"                    | 1-1/4"            |

1) "UNGROUTED CMU" VALUES MAY BE USED FOR GROUTED CMU APPLICATIONS.

2) ALL ANCHOR HEAD TYPES ARE APPLICABLE.



A. LYNN MILLER, P.E., P.E.# 58705

PREPARED BY: A. LYNN MILLER, P.E.  
1070 TECHNOLOGY DR  
N. VENICE, FL 34275  
(941)-480-1600

REGISTRATION #29296  
COPYRIGHT © 2022  
NEWSOUTH WINDOW SOLUTIONS  
LIMITED LICENSE TO MAKE  
COPIES FOR PERMITTING

BY: FIXED WINDOW FPA, LM HVHZ  
SB BMATERIALS/EXTRUSIONS/BOM  
SB BUCK INSTALLATION DETAILS  
NEWSOUTH WINDOW SOLUTIONS  
10741 CROSSROADS COMMERCE BLVD.  
TAMPA, FL 33610

| REVISION:  | DATE:    | #: |
|--|----------|----|
| REVISE SILICONE & ANCHOR, OPTIONS, AND DP TABLES. CORRECT TYPOGRAPHICAL ERRORS. ADD SHAPES, ADD SILICONE 995 | 11/28/22 | B  |
|  | 02/01/23 | C  |

DATE: 02/01/23  
SCALE: NTS  
BY: S.BERKOWITZ  
DRAWING #: PW9650-FPA-02  
SHEET: 10 OF 10